

Informacijski list proizvoda (HR)

Product information (ENG)

VIVAX



100 W
JAČINA MOTORA



281 m³/h
PROTOK ZRAKA



ALUMINIJSKI
FILTER

Ugradbena izvlačna kuhinjska napa CHO-60BI100T B / X

Kuhinjska napa koja je vidljiva samo onda kada je to potrebno. U potpunosti je ugrađena u kuhinjski element dajući vam još više dodatnog prostora za pohranu. Opremljena je perivim aluminijskim filterima masti koji omogućuju učinkovito hvatanje i uklanjanje vlage i dima masti iz vašeg prostora za kuhanje.



Snaga motora
100 W

Brzine motora
3

Protok zraka (ERP)
281 m³/h

Napajanje / Ukupna snaga
102 W

Minimalna / Maksimalna razina buke
60 dB / 70 dB

Klasa energetske učinkovitosti
D

Učinkovitost filtriranja masnoće
D

Razred učinkovitosti osvjetljenja
A

Tip svjetla
2 x 1 W LED Ø 38 mm / 187 lux

Vanjski izgled / Kontrole
Nehrđajući čelik / Sklopka

Tip filtera
2 x Aluminijski filter u 3 slojeva

Ugljeni filter za unutarnju cirkulaciju zraka
CHO-CP100 T (naručuje se posebno)

Promjer odvodnog crijeva / Mjesto priključka
120 mm / Gornja strana

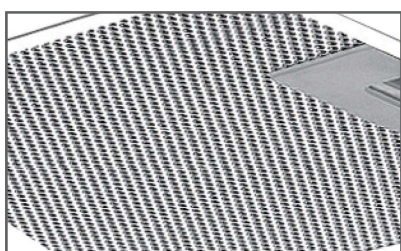
Pribor u kompletu
Nosач i pribor za montažu; Energetska naljepnica;
Upute za uporabu i montažu

Bruto / Neto težina
4,3 kg / 3,5 kg

Dimenzija paketa / Dimenzija uređaja
568 x 254 x 335 mm / 525 x 275 x 203 mm

EAN Kod Crna / EAN Kod Aluminijska
3856005186754 / 3856005186761

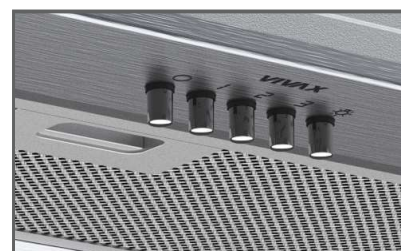
SAP Kod Crna / SAP Kod Aluminijska
1256515 / 1256527



Aluminijski filter



LED Rasvjeta



Mehanička kontrola s 3 brzine

VIVAX



100 W
JAČINA MOTORA



281 m³/h
PROTOK ZRAKA



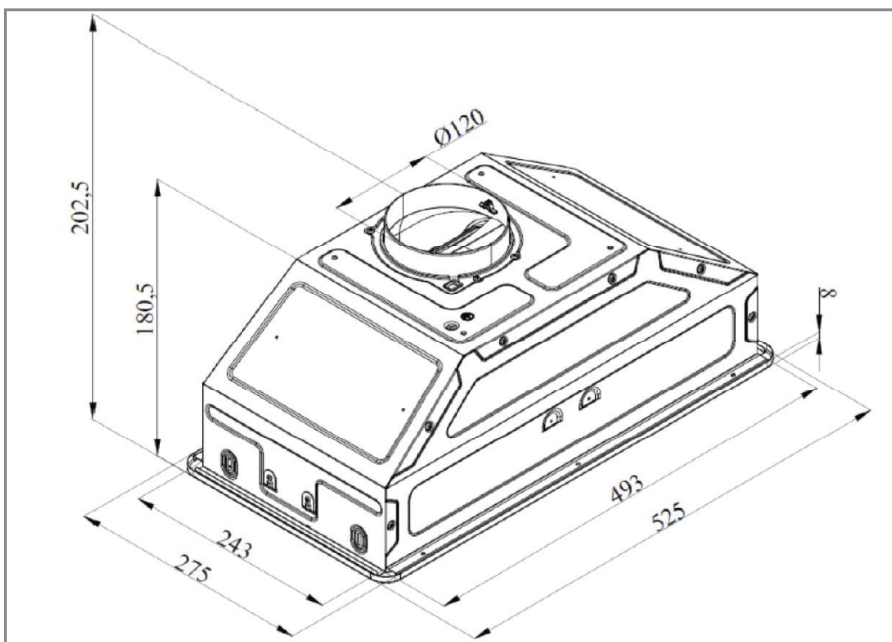
ALUMINIJSKI
FILTER

Ugradbena izvlačna kuhinjska napa CHO-60BI100T B / X

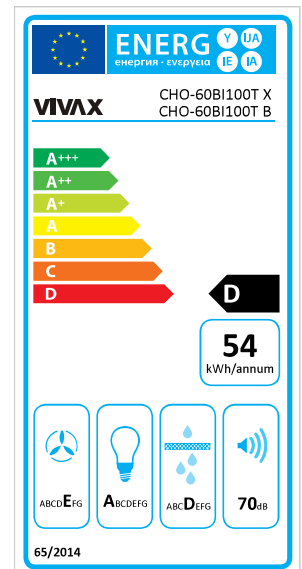
Kuhinjska napa koja je vidljiva samo onda kada je to potrebno. U potpunosti je ugrađena u kuhinjski element dajući vam još više dodatnog prostora za pohranu. Opremljena je perivim aluminijskim filterima masti koji omogućuju učinkovito hvatanje i uklanjanje vlage i dima masti iz vašeg prostora za kuhanje.



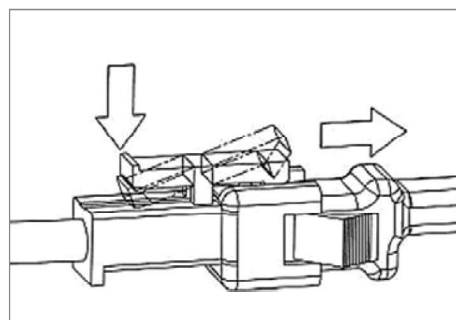
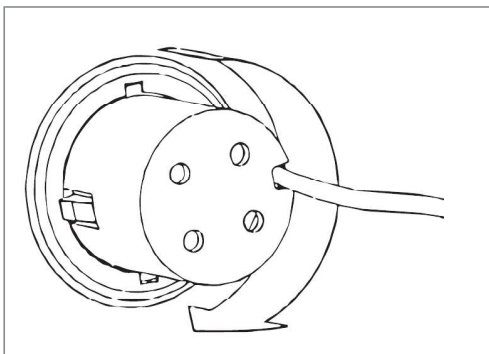
DIMENZIJE PROIZVODA



ENERGETSKA NALJEPNICA



ZAMJENA SVJETLA



UPOZORENJE:

Zamjenu osvjjetljenja mora izvesti ovlaštenu servis ili slična kvalificirana osoba kako bi se izbjegla opasnost od električnog udara.

VIVAX

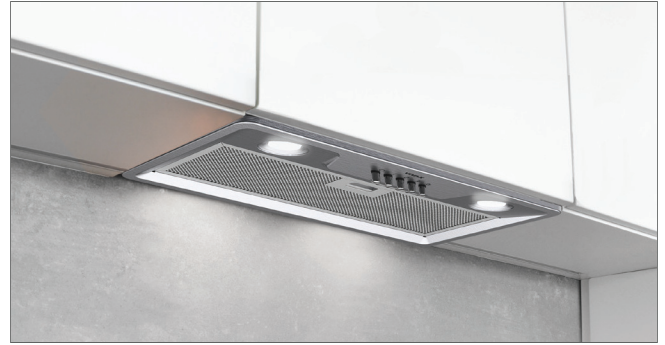

100 W
MOTOR POWER


281 m³/h
AIR FLOW


ALUMINUM
FILTER

Kitchen Hood CHO-60BI100T B / X

A kitchen hood that is only visible when needed. It is fully integrated into the kitchen element giving you even more storage space. It is equipped with washable aluminum grease filters that allow you to efficiently capture and remove moisture and smoke grease from your cooking space.



Motor Power
100 W

Number of engine speeds
3

Air Flow (ErP)
281 m³/h

Power Supply / Power
102 W

Min. / Max. noise level
60 dB / 70 dB

Energy efficiency class
D

Grease filtering efficiency
D

Lighting efficiency class
A

Type of light source
LED 2x 1W 38mm, 187 lux

Exterior / Controls
Stainless Steel / Switch Button

Filter Type
2 x Aluminum filter in 3 layers

Carbon Filter for indoor air circulation
CHO-CP100T (purchased separately)

Exhaust hose diameter / Connection location
120 mm / Upper Side

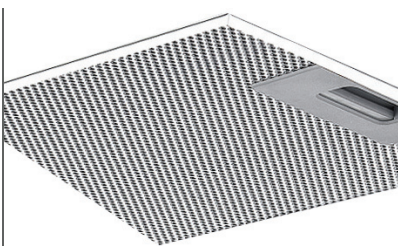
Installation Accessories
Bracket and mounting accessories; Energy label;
Instructions for use and installation

Gross / Net Weight
4.3 kg / 3.5 kg

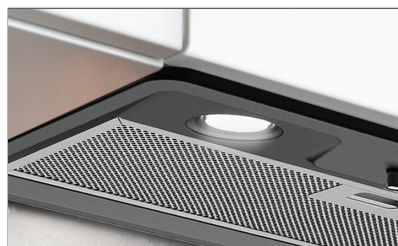
Package Dimension / Appliance Dimension
568 x 254 x 335 mm / 525 x 275 x 203 mm

EAN Code Black / EAN Code Aluminum
3856005186754 / 3856005186761

SAP Code Black / SAP Code Aluminum
1256515 / 1256527



Aluminum Filter



LED lighting



Under cabinet kitchen hood

VIVAX



100 W
MOTOR POWER



281 m3/h
AIR FLOW



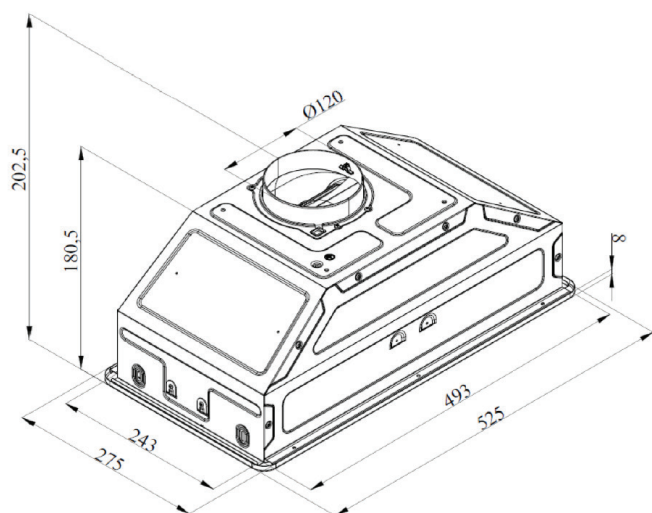
ALUMINUM
FILTER

Kitchen Hood CHO-60BI100T B / X

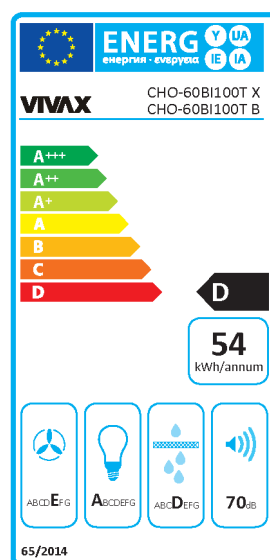
A kitchen hood that is only visible when needed. It is fully integrated into the kitchen element giving you even more storage space. It is equipped with washable aluminum grease filters that allow you to efficiently capture and remove moisture and smoke grease from your cooking space.



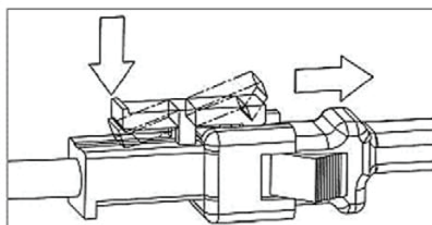
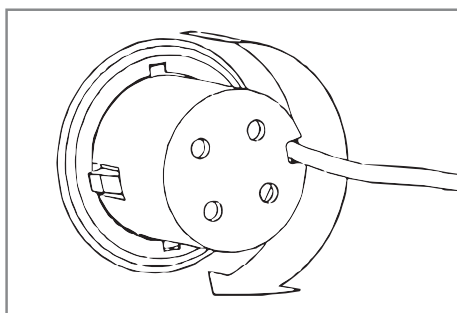
APPLIANCE DIMENSIONS



ENERGY LABEL



LIGHT REPLACEMENT



WARNING:
Lighting replacement must be performed by an authorized service center or similar qualified person to avoid the risk of electric shock.