

# VIVAX

## Built-in Refrigerator CFRB-271ELF

### Description

VIVAX built-in combined refrigerator with freezer CFRB-271ELF, thanks to "Low Frost" technology, does not require frequent defrosting of the freezer.

### Refrigerator type

Built-in

### Refrigerator technology

Low Frost

### Freezer technology

Low Frost

### Freezer star rating

4\*

### Control

Digital

### Display

LED indicators inside the refrigerator

### Door opening

Factory-installed right-side hinges, but reversible

### Energy efficiency

E

### Noise level

38 dB

### Climate class

SN/N/ST/T

### Door material

Painted metal

### Color

White

### Packaging dimensions / Appliance dimensions (WxHxD)

58,5 x 187,5 x 56,4 cm / 54,0 x 177,2 cm x 54,5

### Gross / Net weight

60,0 kg / 55,0 kg

### EAN Code

3856005194987

### SAP Code

1385557



**2 - 8°C**  
TEMPERATURE RANGE



**4 STARS**  
FREEZER



**QUIET**  
38 dB



**DIGITAL CONTROL**  
TEMPERATURE



The fan built into the rear wall significantly contributes to better airflow, improved atmosphere, and reduced humidity inside the refrigerator.

The efficiency is further enhanced by the "Super Cool" and "Super Freeze" functions, which automatically deactivate after 6 and 40 hours, respectively, speeding up the cooling process for larger quantities of food.



The refrigerator is equipped with 4 tempered glass shelves, 1 drawer, and 3 door shelves. The freezer section contains 2 drawers and one pull-out shelf.



The useful refrigerator capacity of 192 L and the net freezer capacity of 79 L provide ample space even for the needs of larger families.

# VIVAX

  
**2 - 8 °C**  
TEMPERATURE RANGE

  
**4 STARS**  
FREEZER

  
**QUIET**  
38 dB

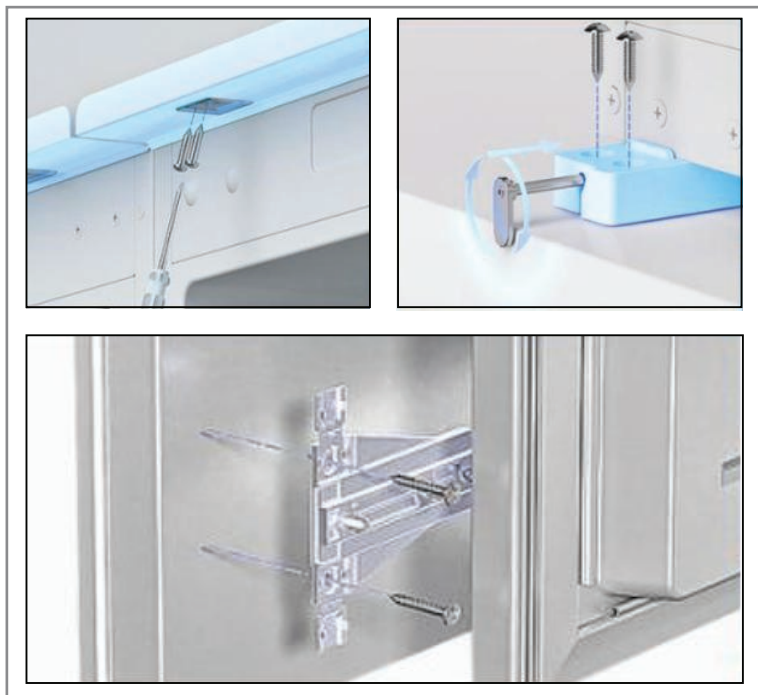
  
**DIGITAL CONTROL**  
TEMPERATURE

## Built-in Refrigerator CFRB-271ELF



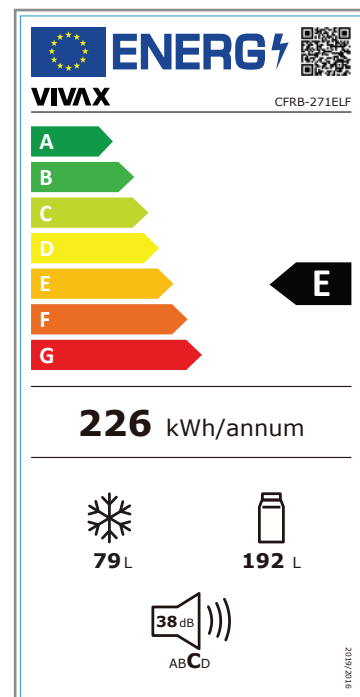
The fan built into the rear wall significantly contributes to better airflow, improved atmosphere, and reduced humidity inside the refrigerator.

The efficiency is further enhanced by the "Super Cool" and "Super Freeze" functions, which automatically deactivate after 6 and 40 hours, respectively, speeding up the cooling process for larger quantities of food.



During installation, there is no need to use a ruler, pencil, or similar tools for installing the refrigerator in the cabinet and attaching the door.

The installation of the refrigerator in the kitchen unit and door mounting is quick, precise, and simple with the help of stoppers that are an integral part of the refrigerator's brackets and feet.



In addition to its energy efficiency, this refrigerator stands out for its exceptionally quiet operation, with only 38 dB.

